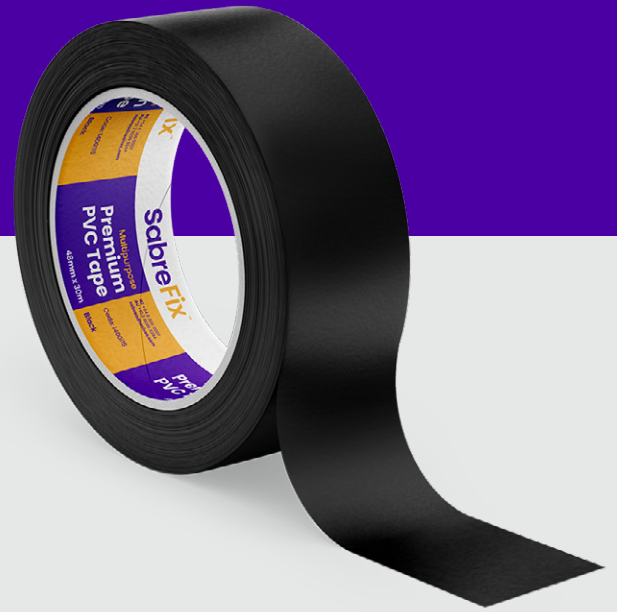


SabreFix™ PVC Duct Tape



Premium Black PVC Tape, Plasticized PVC Backing with a high tack rubber based adhesive. To be used for electrical cable insulation & protection from corrosion, HVAC pipe work & ducting applications and joining plastic sheeting.

Product Specifications

Backing	Plasticized PVC
Adhesive	Self-adhesion
Backing Thickness	0.110mm

*The technical data in this chart should be considered representative or typical only, and should not be used for specification purposes

Application

All surfaces of application must be clean, dry and free of dust or oils. Ideal application temperatures are between 15°C and 25°C. Avoid contact with surfaces containing plasticizers or other chemical agents not compatible with the tape.

Be sure not to contaminate the self-adhesive tape before applying.

Product Features

- Excellent reflection of both heat and light
- Super strong adhesion and holding power
- Good aging resistance both indoors and outdoors
- Excellent sealing and patching performance

Product Characteristics

		TEST METHOD
Adhesion to Steel	0.53 ↑ (kg/25mm)	PSTC-1
Tensile Strength	4.50 ↑ (kg/25mm)	PSTC-1
Elongation	100%	

*The technical data in this chart should be considered representative or typical only, and should not be used for specification purposes

Shelf Life

To obtain best performance, use this product within one year from date of manufacture and store in the original carton under normal conditions of 21°C 50% relative humidity out of direct sunlight.

IMPORTANT NOTICE

MAXILAM NZ LTD MAKES NO WARRANTIES, EXPRESS OR IMPLIED, INCLUDING, BUT NOT LIMITED TO, ANY IMPLIED WARRANTY OF MERCHANT ABILITY OR FITNESS FOR A PARTICULAR PURPOSE. User is responsible for determining whether the product is fit for a particular purpose and suitable for user's method of application. Please remember that many factors can affect the use and performance in a particular application. The materials to be bonded with the product, the surface preparation of those materials, the product selected for use, the conditions in which the product is used, and the time and environmental conditions in which the product is expected to perform are among the many factors that can affect the use and performance of a product. Given the variety of factors that can affect the use of our products some of which are uniquely within the user's knowledge and control, it is essential that the user evaluate the product to determine whether it is fit for a particular purpose and suitable for the user's method of application.

LIMITATION OF REMEDIES AND LIABILITY

If the product is proved to be defective, the exclusive remedy shall be to refund the purchase price or to repair or replace the defective product. MAXILAM shall not otherwise be liable for loss or damages, whether direct, indirect, special, incidental, or consequential, regardless of the legal theory asserted, including negligence, warranty, or strict liability.

New Zealand

+64 6 366 0007
40-42 Cambridge St South
Levin 5510

Melbourne

+61 3 8657 5507
67 Gateway Blvd
Epping, VIC 3076

Sydney

+61 2 9098 8244
Level 6, 10 Herb Elliott Ave
Sydney Olympic Park, NSW 2127